

Product Specifications

CAMERA

- Sony super-low-light 2M pixel sensor for clear and natural imaging in low-light conditions
- Resolution: (16:9) 1920 x 1080, 1600 x 900, 1280 x 720, 960 x 540, 848 x 480, 800 x 448, 640 x 360, 424 x 240, 320 x 180; (4:3) 800 x 600, 640 x 480, 480 x 360, 320 x 240 at 60, 30, 15fps
- SmartFrame for automatic FOV adjustment to fit all participants
- True WDR up to 120 dB: Superb backlight compensation technology for optimizing light balance in high-contrast conditions
- Zoom: 18X total zoom (12X optical zoom)
- Wide field of view (DFOV): 82°
- Lens focal length: 3.9 mm (wide)–47.3 mm (tele)
- Lens F#: 1.8 (wide)–2.8 (tele)
- Mirror, flip, AE, white balance: auto, manual override via PTZApp
- Minimum focus distance: 1.5 m
- Standard tripod screw holes and Kensington slot

Speakerphone

- Full duplex microphone array with echo cancellation
- Advanced noise suppression
- Dual-microphone array
- 3.5 mm phone-in jack
- 3.5 mm line out
- Speaker: 6W, Adjustable to 90dB SPL at 0.5 m
- Microphone: 360° and 6 m Diameter audio Pickup Range
- Touch controls for volume down/up, mute, phone input (Microsoft Teams SKU w/o this function), call, hang-up, and Teams button*
- Bridge phone-in and USB into one call
- Security: Kensington slot
- 40 m range via AVer expansion devices

*Only available for the VC520 Pro Microsoft Teams edition

Control

- IR remote control
- VISCA/Pelco-P/Pelco-D via RS232 (128 preset points via VISCA command)
- Remote side: VISCA over IP, IP (RJ45)
- UVC/UAC plug-and-play
- WebUI: Browser IP access via Chrome (does not support Internet Explorer)
- PTZApp

USB

- 3.1 Gen 1 Type-B, backward compatible with USB 2.0
- UVC (USB video class) 1.1
- UAC (USB audio class) 1.0

Optional Accessories

- Mini DIN9 to RS232 adapter
- Expansion Speakerphone
- Expansion Microphone
- Foldable TV mount

Motorized Pan & Tilt Movement

- Pan: ±170°
- Tilt: +90° (up) -30° (down)
- 10 camera presets (through remote control)
- Fast and quiet pan & tilt movement

Video Format

- YUV, MJPEG, H.264
- Network video compression format: H.264
- Network protocols: RTSP, RTMP

Connectivity

- 12V/5A power adaptor
- Mini DIN9 for RS232 in & out connection (VISCA control panel and camera daisy-chain)
- USB 3.1 Type-B connector (A third-party USB repeater or extender function can be used to extend connectivity over 20 m)
- IP (RJ45)

LAN

- 10/100/1000 Mbps

Audio Format

- AAC-LC
- Network protocol: RTSP, RTMP

Mount

- Camera wall-mount bracket included
- Optional foldable TV mount

System Requirements

- Windows® 7/10
- Mac OS X 10.13 or higher
- Google Chromebook version 76.0.3809.102 or later
- Android 6 or higher

Hardware Specs

- 3.2 GHz Intel® Core™ i5-4460 Processor or higher
- 4 GB RAM or more
- USB 3.1 port, backward compatible with USB 2.0 port

Environmental Data

- Operation temperature: 0°C ~ 40 °C
- Operation humidity: 20% ~ 80%
- Storage temperature: -20°C ~ 60°C
- Storage humidity: 20% ~ 80%

Dimensions

- Package dimensions: 259 x 259 x 349 mm*
- Package weight: 5.4 kg*
- Camera: 142.7 x 153 x 182 mm/1.45 kg
- Speakerphone: 220 x 181.5 x 49.5 mm/0.85 kg
- Remote control: 200 x 50 x 21 mm/0.09 kg

*VC520 Pro Microsoft Teams edition
Package dimensions: 348 x 251 x 308 mm
Package weight: 6.7kg

Web page browser requirement

- Chrome: version 76.x or above
- Firefox: version 69 or above
- IE: Not support

Power Supply

- AC 100V ~ 240V, 50/60 Hz
- Consumption: 12V, 5A

Free Applications for Meeting Collaboration (Windows® and Mac)

EZManager: Camera Central Management software
• Remotely group FW/SW upgrades, control the camera, and configure settings

PTZApp

- Upgrade firmware automatically or manually
- Control camera
- Set parameters and adjust camera image
- Diagnose operating status
- View live video

EZLive

- Real-time streaming / annotating / snapshots / video recording

Package Contents

- VC520 Pro Camera
- VC520 Pro Speakerphone
- Remote control
- Power adaptor
- Power cord (6 ft/1.8 m)
- USB 3.1 Type-B to Type-A cable (10 ft/3 m)
- CATE6 speakerphone cable (33 ft/10 m)
- 3.5 mm aux cable (3 ft/0.9 m)
- Quick-start guide
- Warranty card
- Wall-mount bracket
- ¼" tripod screw
- 2 Expansion Microphone and 5 m Cable*

*Only available for the VC520 Pro Microsoft Teams edition

Warranty*

- Camera / Speakerphone: 3+2 years (not available in US, JP, and certain other areas)
- Accessories: 1 year

* Please register online to receive a free 2-year warranty extension. For detailed warranty information, please contact an AVer representative.

Compatible Applications

Zoom, Microsoft® Teams, Skype for Business, Skype, Google Meet, Intel® Unite™, RingCentral, BlueJeans, V-Cube, LiveOn, CyberLink U Meeting®, TrueConf, Vido, Adobe® Connect™, Cisco Webex®, Fuze, GoToMeeting™, Microsoft® Lync™, vMix, WebRTC, Wirecast, XSplit

**Specifications may vary depending on countries and are subject to change without notice.

AVer



VC520 Pro

Professional Conferencing System for Mid-to-large Rooms



Product Appearance

CAMERA BACK PANEL



- Available with VC520 Pro Speakerphone set
- DC12V
- LAN for IP streaming/remote access
- USB 3.1 Type-B
- RS232 in/out

SPEAKERPHONE BACK PANEL



- Daisy-chain up to 3 speakerphones or 4 microphones
- Available with VC520 Pro camera set
- Phone in
- Line out

SPEAKERPHONE



Standard edition



Microsoft Teams edition

AVer

©2021 AVer Information Inc. All rights reserved.
All brand names and logos are trademarks of their respective companies.

www.aver.com

CE FC RoHS COMPLIANT

Distributor/Dealer

202101



Standard edition



Microsoft Teams edition

A LIFELIKE AUDIOVISUAL EXPERIENCE

The VC520 Pro is equipped with a 12X optical zoom and daisy-chain speakerphone that deliver a lifelike audiovisual experience. With 1080p HD quality, Sony True WDR, and IP-based management features, the VC520 Pro is the professional conferencing system your enterprise needs.



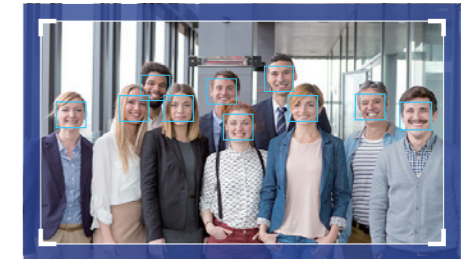
Perfect Audio for Professional Conferencing

Experience lifelike audio in various sizes of meeting rooms with the VC520 Pro. The speakerphone's pickup range is up to 6 meters in diameter, or you can daisy-chain two additional speakerphones to fit into your conference room configuration. Touch controls make it easy to adjust or mute the volume, and echo cancellation ensures a steady audio experience. You can also connect extra microphones for ultra-clear voice pickup.



SmartFrame Captures Everyone in Seconds

Improve productivity by starting meetings instantly. The VC520 Pro processes facial recognition to capture everyone on-screen in seconds and automatically re-frames whenever someone walks in or out of the room.



Professional Clarity with 12X Optical Zoom

Show every detail precisely and smoothly to enhance communication. The VC520 Pro is embedded with a 12X true optical zoom and multi-coated auto-focus optics to present complex product details in full HD 1080p quality.



Video Streaming and Remote Control via IP-Based Management

The VC520 Pro features advanced centralized management through the Chrome browser. Remotely control the camera and share on Facebook or YouTube with H.264 and AAC-LC RTSP/RTMP streaming in 1080p at 60fps via USB 3.1.



VC520 Pro Microsoft Teams Rooms Edition

This exclusive version of the VC520 Pro speakerphone lets you start meetings instantly with an embedded Microsoft Teams button* and LED status indicator. Just touch the button to enter a meeting and check the call status. Also, you can enjoy an always-clear audio experience via the two expansion microphones that come with this special edition system.



*Only available for the VC520 Pro Microsoft Teams edition, which includes a camera, a speakerphone, and two expansion microphones.



Full HD 1080p



Sony True WDR



18X zoom



Expansion Speakers/
Microphones



Microsoft Teams
Rooms Edition